

CROSS REFERENCE CHART

HU-FRIEDY PART CODE	COMPETITIVE CLAMP NUMBER	HU-FRIEDY PART CODE	COMPETITIVE CLAMP NUMBER	HU-FRIEDY PART CODE	COMPETITIVE CLAMP NUMBER
RDCM0	0	RDCMW7	W7	RDCM25	
RDCM00	00	RDCM8	8	RDCM26	26
RDCM1	1	RDCM8A	8A	RDCM26N	26N
RDCM1A	1A	RDCMW8A	W8A	RDCM27	27
RDCM2	2	RDCM8AD		RDCM27N	27N
RDCMW2	W2	RDCM9	9	RDCM28	28N
RDCM2A	2A	RDCM9S	9T	RDCM29	
RDCM2AS	2AT	RDCM10	10	RDCM30	
RDCM3	3	RDCM11	11	RDCM31	
RDCMW3	W3	RDCM12A	12A	RDCM56	56
RDCM4	4	RDCM13A	13A	RDCM56S	56T
RDCMW4	W4	RDCM14	14	RDCM201	
RDCM5	5	RDCM14A	14A	RDCM205	
RDCM6	6	RDCMW14A	W14A	RDCM209	209
RDCM7	7	RDCM18		RDCM212	212
RDCM7A	7A	RDCM24		RDCM212SA	212SA



RUBBER DAM CLAMPS

REDUCE GLARE WITH SATIN STEEL®

For more information about
Hu-Friedy's Total Solutions visit
HU-FRIEDY.EU

PERIODONTAL

RESTORATIVE

ORTHODONTIC

INSTRUMENT
MANAGEMENT

ENDODONTIC

SURGICAL

ULTRASONIC
SCALING

Manufacturer: Hu-Friedy Mfg. Co., LLC | 3232 N. Rockwell Street | Chicago, IL 60618 | USA
Customer Care Department: Hu-Friedy Mfg. B.V. | P.O. Box 29025 | NL-3001 GA Rotterdam | Netherlands
Free Phone 00800 48 37 43 39 | Free Fax 00800 48 37 43 40 | Website: Hu-Friedy.eu

©2012 Hu-Friedy Mfg. Co., LLC. All rights reserved. HF-GB-460/0712



How the best perform



ENDODONTIC



48 WAYS TO INCREASE VISIBILITY



FACT

Today's dental lighting is brighter and more intense than ever before. Yet most rubber dam clamps reduce visibility by reflecting this light back into your eyes, creating a blinding glare.

CHALLENGE

Finding a rubber dam clamp that increases visibility and is available in a wide range of sizes and applications is often challenging.

SOLUTION

Hu-Friedy's Satin Steel Rubber Dam Clamps offset bright clinical lighting. Hand-crafted to absorb and dissipate light instead of reflecting it back, these matte-finish rubber dam clamps are available in 48 sizes to help you perform at your best.

The result is clear, with Hu-Friedy's Satin Steel, you can experience a comfortable field of vision that's easier on the eyes.

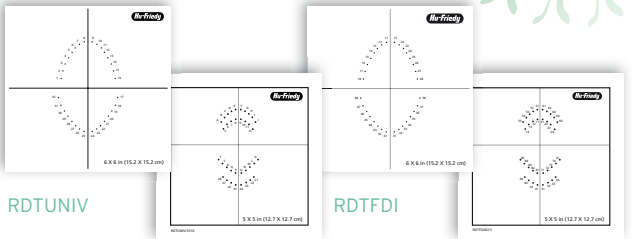
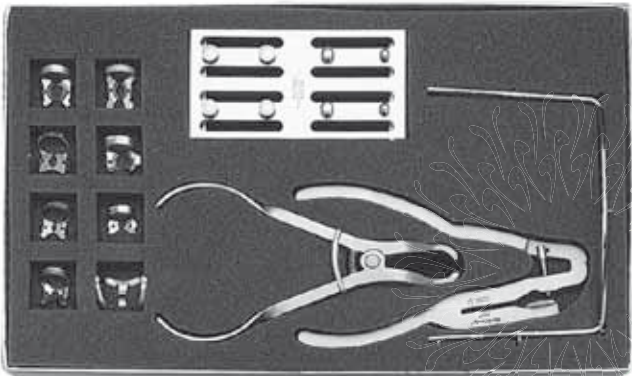
SATIN STEEL RUBBER DAM CLAMP
REFERENCE POSTER INSIDE.

RUBBER DAM KIT (RDKIT)

Basic items needed for rubber dam procedures conveniently packaged in a kit (also available individually).

DESCRIPTION	PART CODE
Rubber Dam Clamp Forceps	RDF
Rubber Dam Punch	RDP
Rubber Dam Frame—Adult	RDAF6
Universal Rubber Dam Template	RDTUNIV
FDI Rubber Dam Template	RDTFDI
Rubber Dam Clamp Organizing Board	RDCOB
#0 Satin Steel Rubber Dam Clamp	RDCM0
#1 Satin Steel Rubber Dam Clamp	RDCM1
#2 Satin Steel Rubber Dam Clamp	RDCM2
#7 Satin Steel Rubber Dam Clamp	RDCM7
#8 Satin Steel Rubber Dam Clamp	RDCM8
#8A Satin Steel Rubber Dam Clamp	RDCM8A
#14A Satin Steel Rubber Dam Clamp	RDCM14A
#212 Satin Steel Rubber Dam Clamp	RDCM212

KITS AND SETS



RUBBER DAM CLAMP SET (RDCSET7)

A popular set for basic coverage. Other clamp sets also available.

DESCRIPTION	PART CODE
#00 Satin Steel Rubber Dam Clamp	RDCM00
#2 Satin Steel Rubber Dam Clamp	RDCM2
#7 Satin Steel Rubber Dam Clamp	RDCM7
#8 Satin Steel Rubber Dam Clamp	RDCM8
#8A Satin Steel Rubber Dam Clamp	RDCM8A
#9 Satin Steel Rubber Dam Clamp	RDCM9
#14A Satin Steel Rubber Dam Clamp	RDCM14A



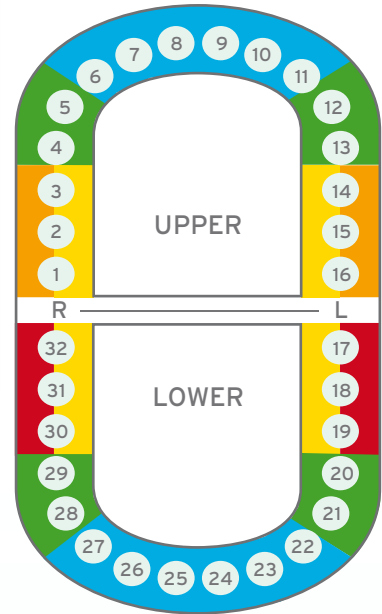
SATIN STEEL RUBBER DAM CLAMPS

A complete line for anterior, premolar and molar applications

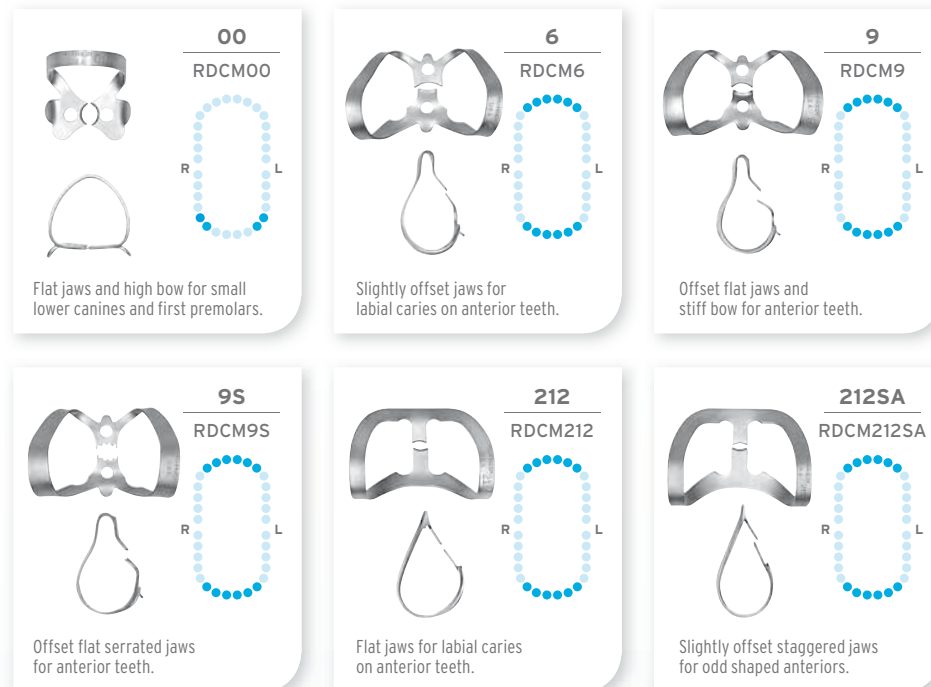


How the best perform

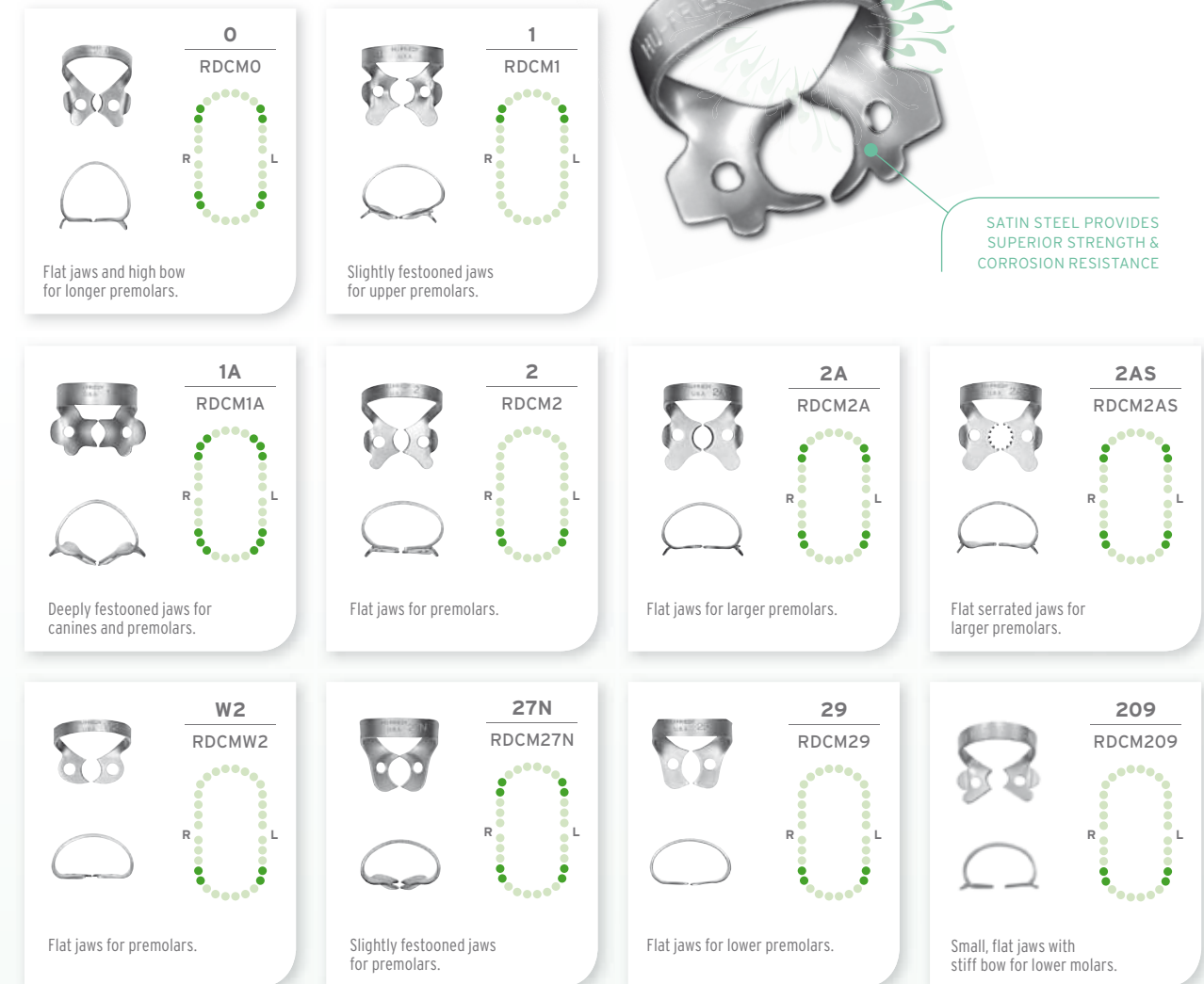
Hu-Friedy



ANTERIOR RUBBER DAM CLAMPS



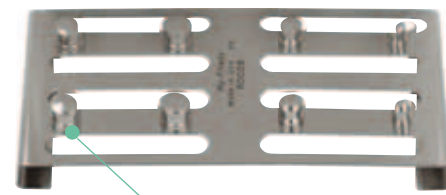
PREMOLAR RUBBER DAM CLAMPS



SATIN STEEL PROVIDES
SUPERIOR STRENGTH &
CORROSION RESISTANCE

ACCESSORIES

Hu-Friedy also has a full range of accessories useful for rubber dam clamp applications including forceps, punches, frames, templates, and an organizing board (shown on right).



EIGHT PEGS SECURELY HOLD
VARIOUS SIZED CLAMPS

MOLAR RUBBER DAM CLAMPS (GENERAL)



UPPER MOLAR RUBBER DAM CLAMPS



LOWER MOLAR RUBBER DAM CLAMPS

